

JUST TRANSITION MECHANISM

Public Sector Loan Facility

17 February 2026

Sintia Farah
Project Officer
DG REGIO.F1



#EUinmyregion #CohesionPolicy



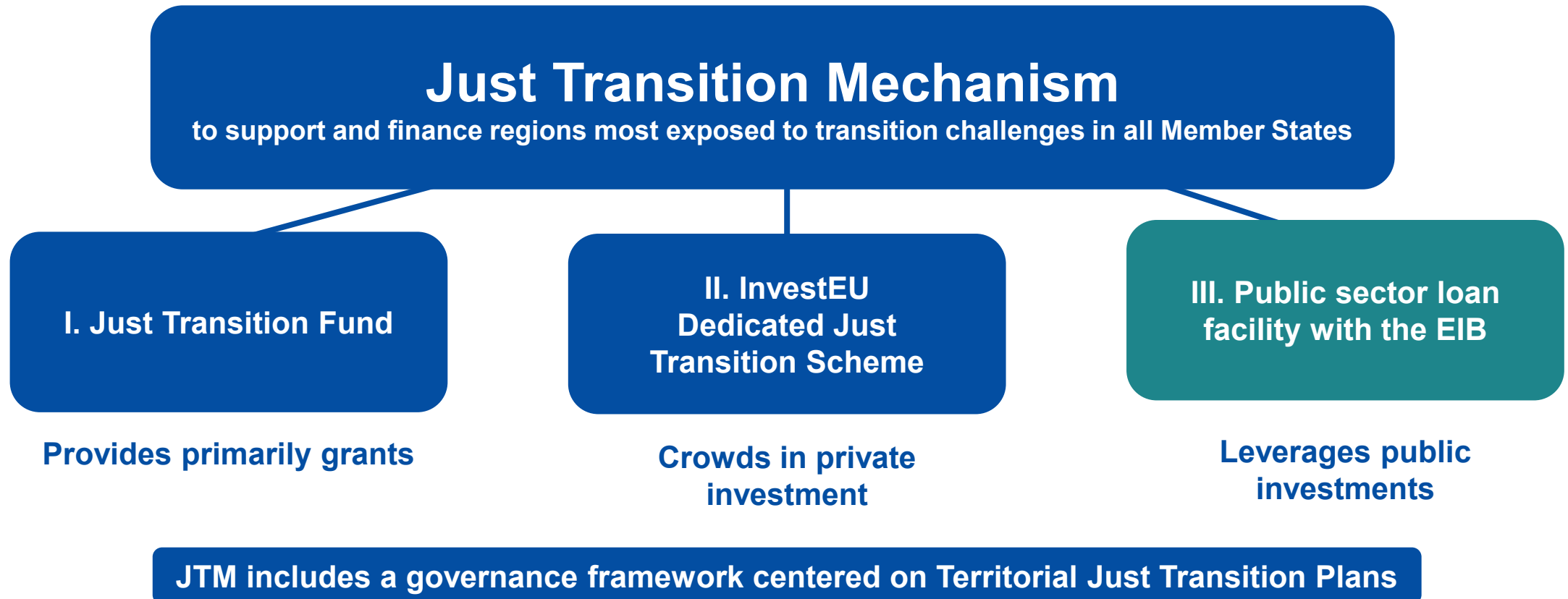
European
Commission

*Regional and
urban Policy*



Main features of the public sector loan facility

Just Transition Mechanism

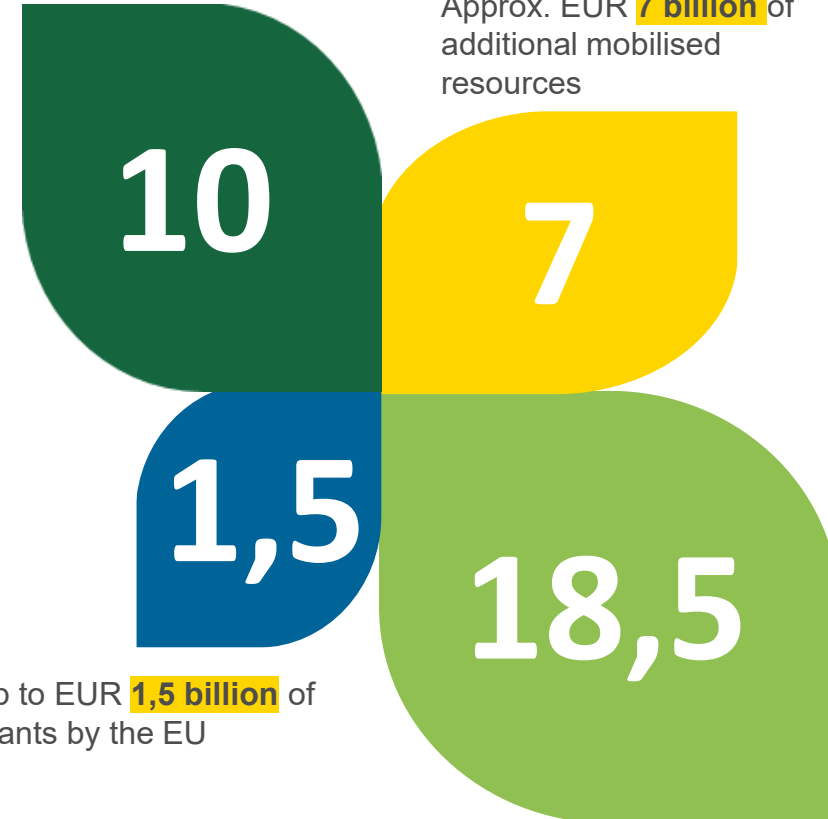


PSLF is a blending facility



Up to EUR **10 billion** of loans by the European Investment Bank

Approx. EUR **7 billion** of additional mobilised resources



Up to EUR **1,5 billion** of grants by the EU

To mobilise EUR **18,5 billion** of public investments

PSLF – Main features

Beneficiaries

Public sector entities
(including private law bodies
with a public service mission)



Financing not linked to costs

The grant is a percentage of the loan -
15%, or 25% in less developed regions
Grants cannot be disbursed before the EIB
financing agreement is signed



Geographical scope

Projects must benefit a territory identified
in an adopted TJTP (even if not located in
such territory)
Consult the map on the [Just Transition Platform](#)



Budget

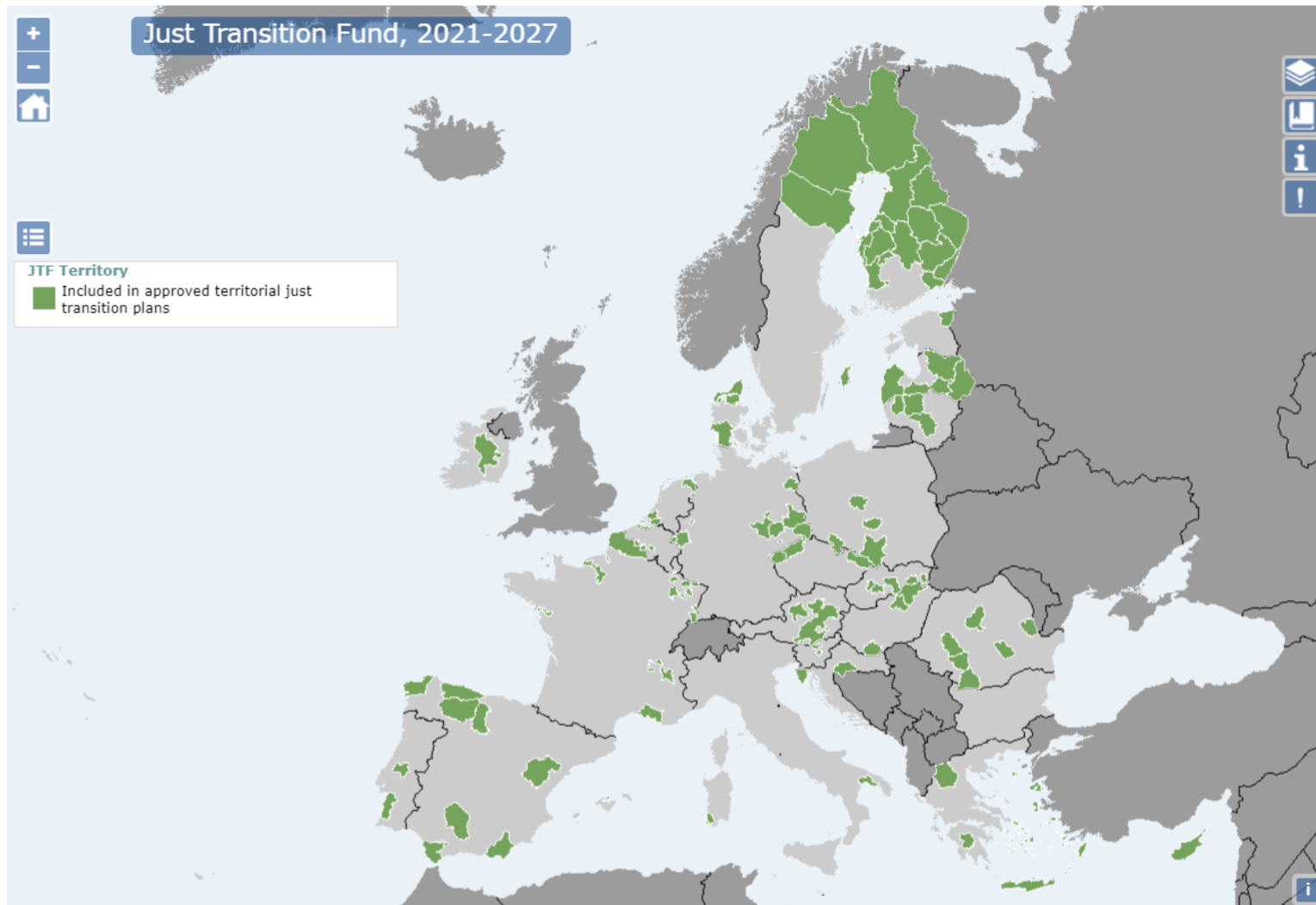
Over **EUR 630 million** until end of 2027
Grants available to all EU Member States on a competitive
basis, with no pre-allocated national envelope
Follow the budget consumption on [CINEA webpage](#)



Advisory support

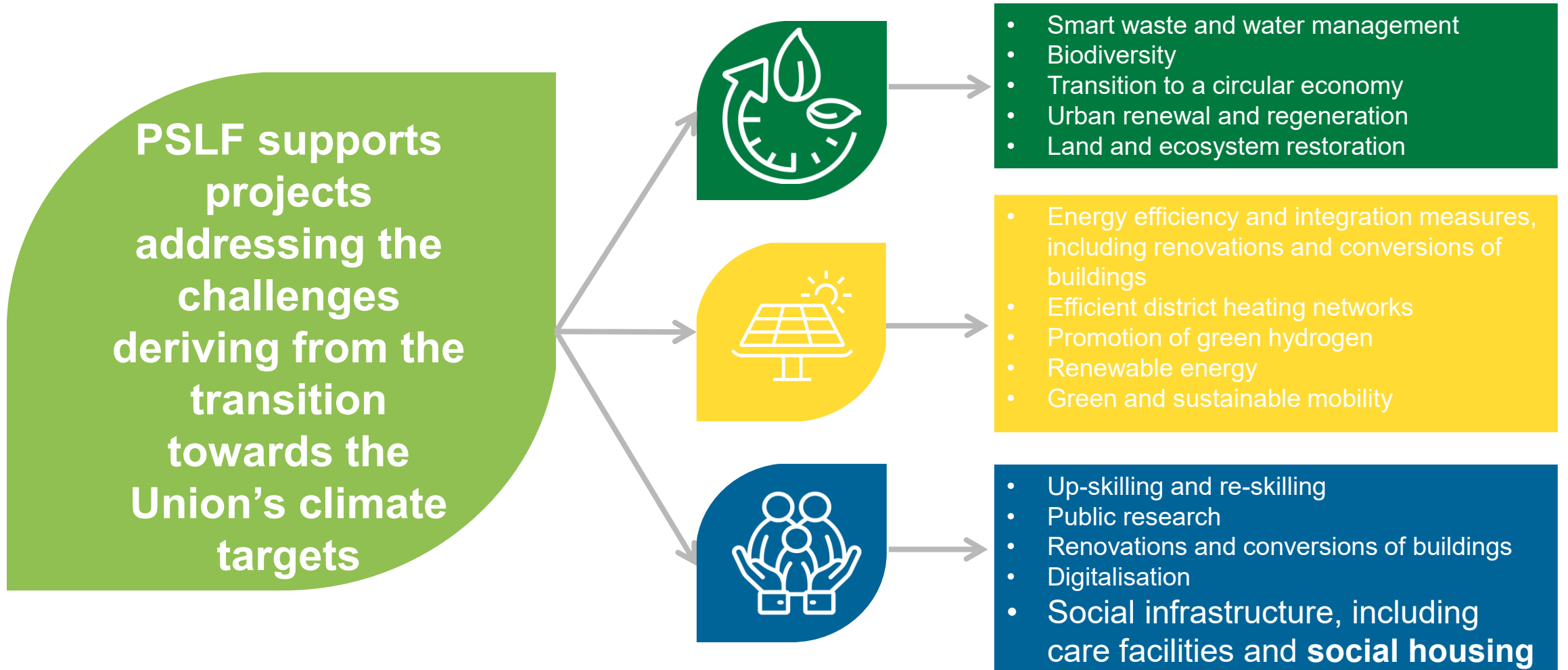
EUR 35 million
Apply for advisory support here: [InvestEU Advisory Hub](#) website

Territorial Just Transition Plans



Consult the relevant Territorial Just Transition Plan on the [Just Transition Platform](#) and on CINEA website: [Investment areas](#)

Objective and scope



*And other areas listed in the Regulation and related to the sectors covered in the Territorial Just Transition Plans

Project budget – an example



Minimum EIB loan amount:

- The loan percentage is on average 50% (or above)
- EUR 12.5 million

Minimum grant:

- The grant is a percentage of the loan - 15%, or **25%** in less developed regions
- EUR 1.8, or 3.1 million in less developed regions

Effective grant rate / investment cost:

- 5-18% on average

Minimum budget of individual projects:

- EUR 25 million – loan schemes needed for smaller projects

Eligible projects must not generate **sufficient streams of revenues** to cover investment costs

Projects cannot receive support from **other Union programmes**



How to apply for an EU grant?

PSLF second call for proposals 2026-2027

€630 million in grants available to all EU Member States on a competitive basis, with no pre-allocated national envelopes



Four intermediary submission cut-off dates:

1. **27 Jan 2026 17:00 CET**
2. **16 Apr 2026 17:00 CET**
3. **17 Sep 2026 17:00 CET**
4. **16 Feb 2027 17:00 CET**



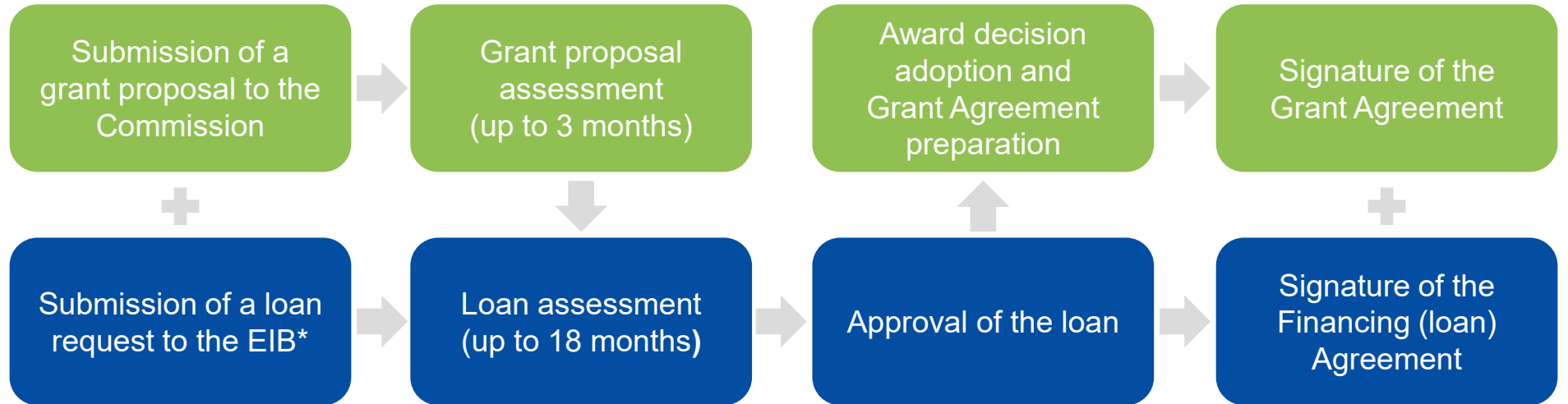
Two distinct call topics depending on the type of EIB loan:

- **JTM-2026-PSLF — STANDALONE PROJECTS**
- **JTM-2026-PSLF — FRAMEWORK LOANS**



The call was published on 23 October 2025 on the [Funding & Tenders Portal](#)

Application process



*before or in parallel to submission of the grant proposal

* in case of framework loans, before submission of the grant proposal

PSLF-funded projects

Social infrastructure

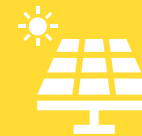
Health/care facilities
Social housing
Infrastructure for education
and lifelong training



 Construction of sustainable social housing in Västerbotten €11 M

Energy efficiency

District heating
Renewable energy
Decarbonisation
Renovation and conversion
of buildings



 Development of a new Mijnwater heating and cooling grid in Heerlen €15M

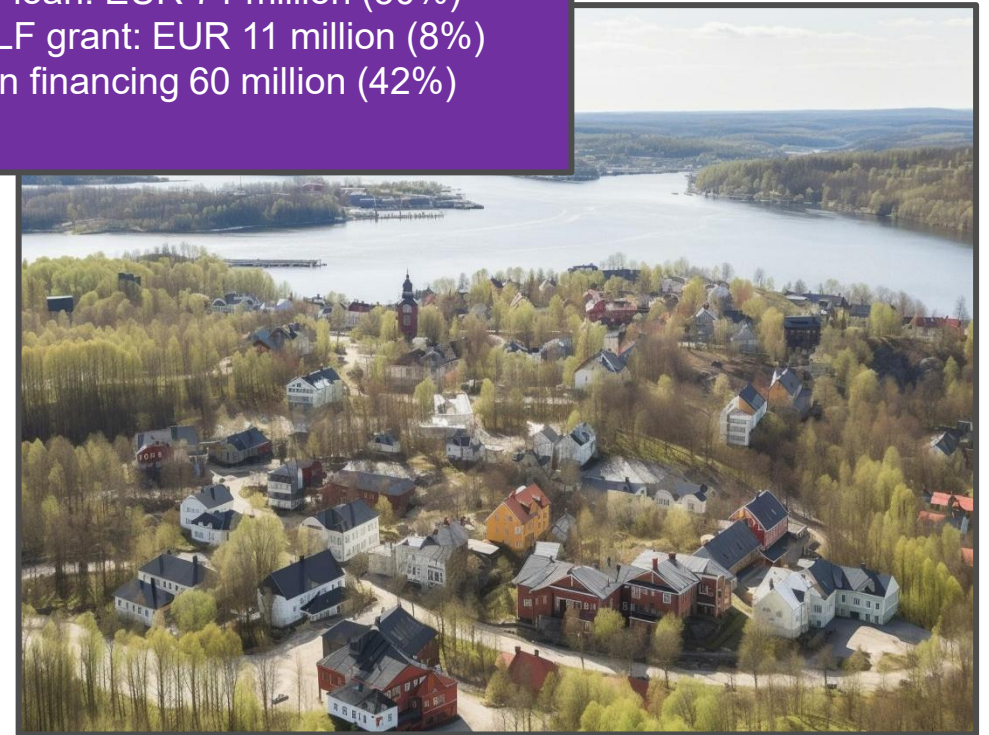
Project example: Sustainable and Affordable Housing for the New Green Industry and Society (SE)

- Mining and high intensive industry region in the northern Sweden (**Västerbotten County**)
- Project implementation:
- Construction of around **750** energy-efficient affordable **housing units**
- Project will address growing housing needs of the city of Skellefteå coming from development of **new green industry**

More information: [Sustainable and affordable housing to support green growth in Sweden - European Commission \(europa.eu\)](https://ec.europa.eu/eip/eip-se/en/sustainable-and-affordable-housing-to-support-green-growth-in-sweden)

Financial support:

- Total costs: EUR 142 million (100%)
- EIB loan: EUR 71 million (50%)
- PSLF grant: EUR 11 million (8%)
- Own financing 60 million (42%)



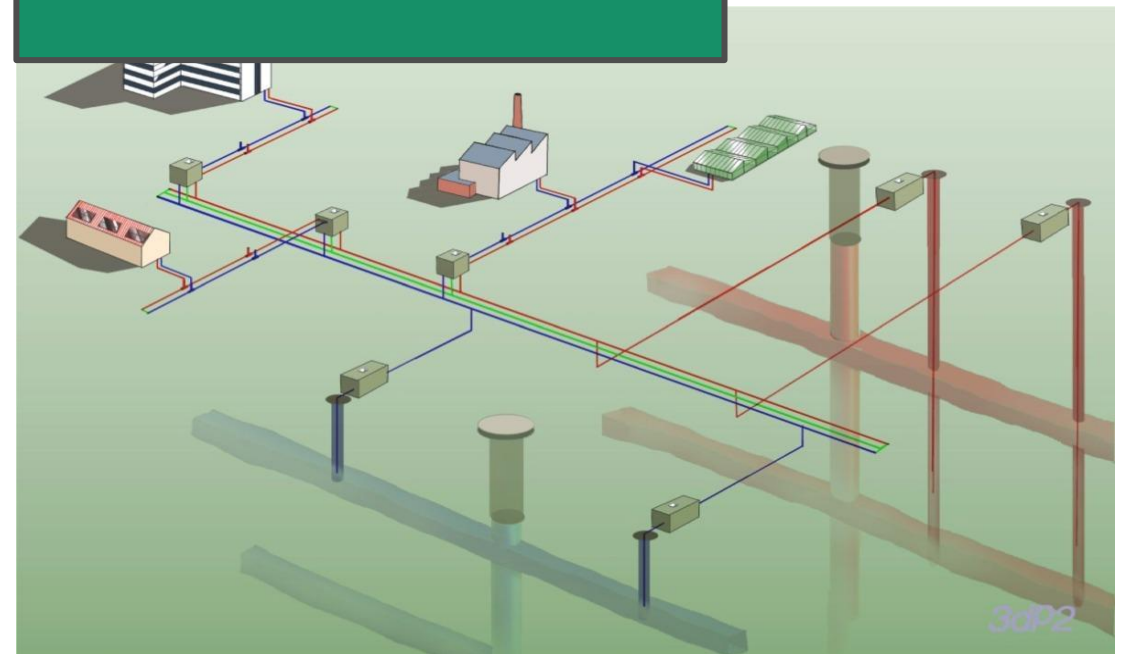
Project example: 'Mijnwater' Sustainable Heating and Cooling

- Extension of the existing '**Mijnwater**' **district heating and cooling network** in the Limburg Province, Netherlands (Municipality of Heerlen)
- The network is considered as one of the **most advanced 5th generation heating and cooling network** in Europe (with heat and cool supplied by underground waters from closed coal mines)
- Project implementation:
 - Connection of around **1000 (social) household units** to the network
 - Project is expected to reduce **the intensity of CO2 emissions** and contribute to **higher energy efficiency**

More information: [European support for sustainable district heating and cooling grid in Zuid-Limburg](#)

Financial support:

- Total costs: EUR 164 million (100%)
- EIB loan: EUR 90 million (55%)
- PSLF grant: EUR 13,5 million (8%)
- Own financing 60,5 million (37%)



Useful resources

General information about PSLF

- [Regulation 2021/1229](#)
- [Just Transition Platform](#)
- [CINEA website](#)
- [PSLF Info Day recording](#)

EIB

- [Regional development & cohesion \(eib.org\)](#)
- [EIB helpdesk](#)

Advisory support

- [InvestEU Advisory Hub](#)

Call for proposals & application process

- CINEA-JTM-PSLF@ec.europa.eu
- [EU Funding & Tender Opportunities Portal](#)
- [EU Funding & Tenders Portal PSLF projects page](#)
- [Call document](#)
- [Call FAQ](#)
- [Support for applicants including a tutorial](#)
- [Online Manual](#): Step-by-step guidance
- [IT-How-to](#): IT guidance with screenshots
- [IT helpdesk](#)
- Service desk contact: EC-FUNDING-TENDER-SERVICE-DESK@ec.europa.eu +32 2 29 92222

Thank you



© European Union 2020

Unless otherwise noted the reuse of this presentation is authorised under the [CC BY 4.0](https://creativecommons.org/licenses/by/4.0/) license. For any use or reproduction of elements that are not owned by the EU, permission may need to be sought directly from the respective right holders.

